

PORT *de la* MER

LE PONT

 MERAAS





Meraas is dedicated to making Dubai and the UAE even better for people to live, work and play. Our design aims to connect all of our diverse peoples at some of Dubai's most sought-after addresses. Our residences at City Walk, Bluewaters, Jumeira Bay, Pearl Jumeira and La Mer stimulate a creative urban culture of thriving communities. Meraas' continuing investment in food, retail, leisure, hospitality, health and real estate is ensuring a better, more prosperous future for generations to come.

A LEADING DEVELOPER IN DUBAI



LA MER

Set within the prestigious Jumeirah 1 neighbourhood, La Mer is an inspirational beachfront destination. With minimalist contemporary design, it boasts premium dining, shopping, entertainment, leisure and hospitality experiences alongside 2.5 kilometers of pristine beaches. The residential community here benefits from excellent connectivity to the city's most popular attractions, and easy accessibility to Dubai' s international airports.





**EXPERIENCE A TRULY WORLD-CLASS
BEACHFRONT AT LA MER**

C ONNECTIVITY

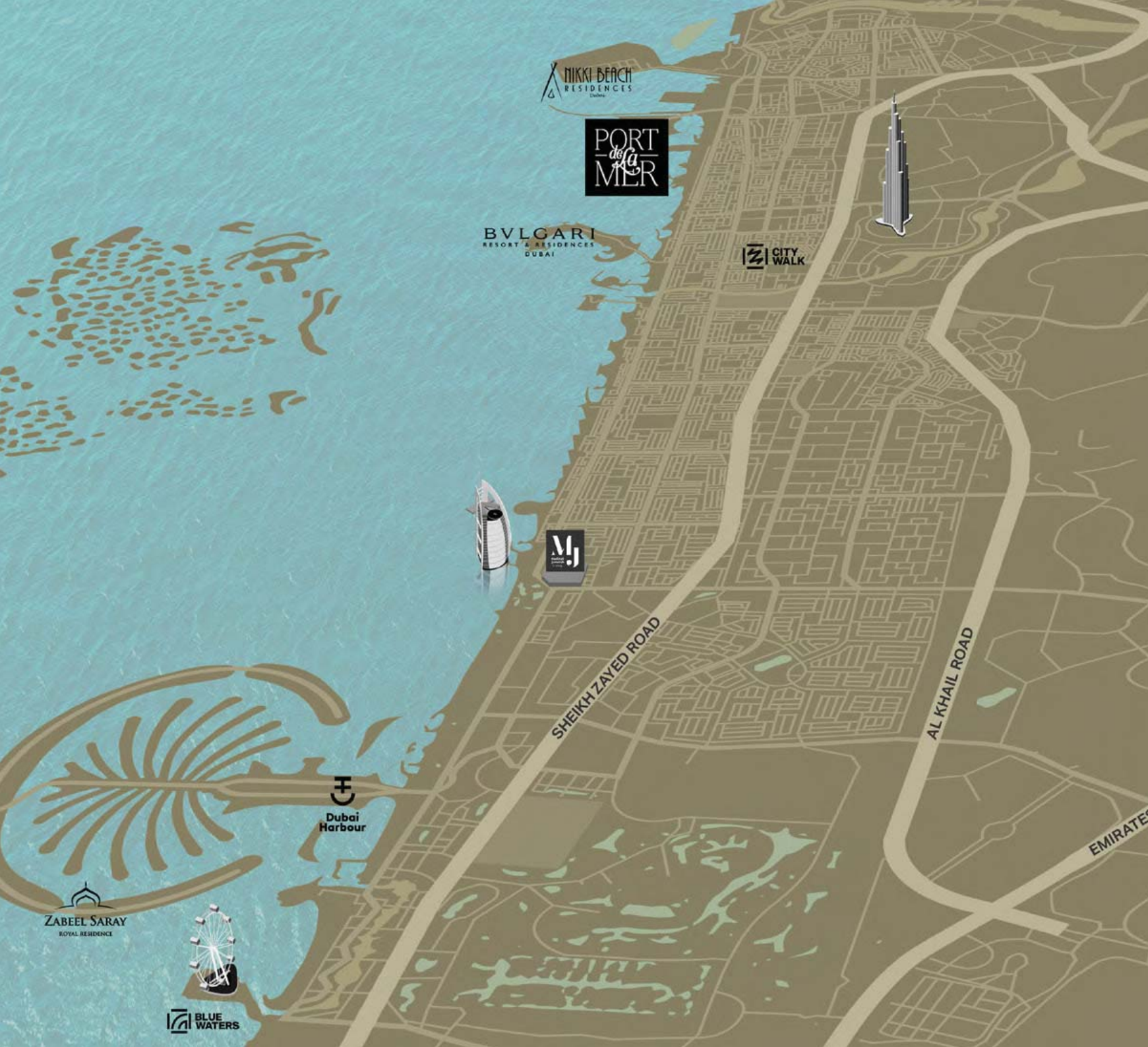
PORT
de La
MER

Port de La Mer is easily accessible from all major road links. Located within La Mer and only minutes from City Walk, this waterside destination has everything one could desire within close vicinity. Dubai international Airport is also a short drive away, and for those who enjoy the glitz and glamour of the city, shopping malls, attractions and restaurants are also at your doorstep.

- 5 min – La Mer by Meraas
- 10 min – City Walk by Meraas
- 15 min – Dubai International Airport
- 45 min – Al Maktoum International Airport



MAP



PORT
de La
MER



Inspired by the charm of the Mediterranean, Port de La Mer provides people who live here a panoramic view of open waters and Dubai skyline, and also a new choice of life. The residences blend modern architecture and the interior design. Besides, the residences are surrounded by beaches and docks, presenting a picture of quiet and comfortable beachfront life, bringing people live here life passion and vitality.

P ORT DE LA MER

REVEL IN THE SUN, SAND AND WAVES AT PORT DE LA MER



A modern multi-story apartment building with a swimming pool and lounge area at dusk. The building has a light-colored facade with dark window frames and balconies. In the foreground, there is a swimming pool with a wooden deck, lounge chairs, and umbrellas. A few people are swimming in the pool. In the background, a marina with boats and a city skyline are visible under a sunset sky.

A FULL RANGE OF FACILITIES AT YOUR DOORSTEP

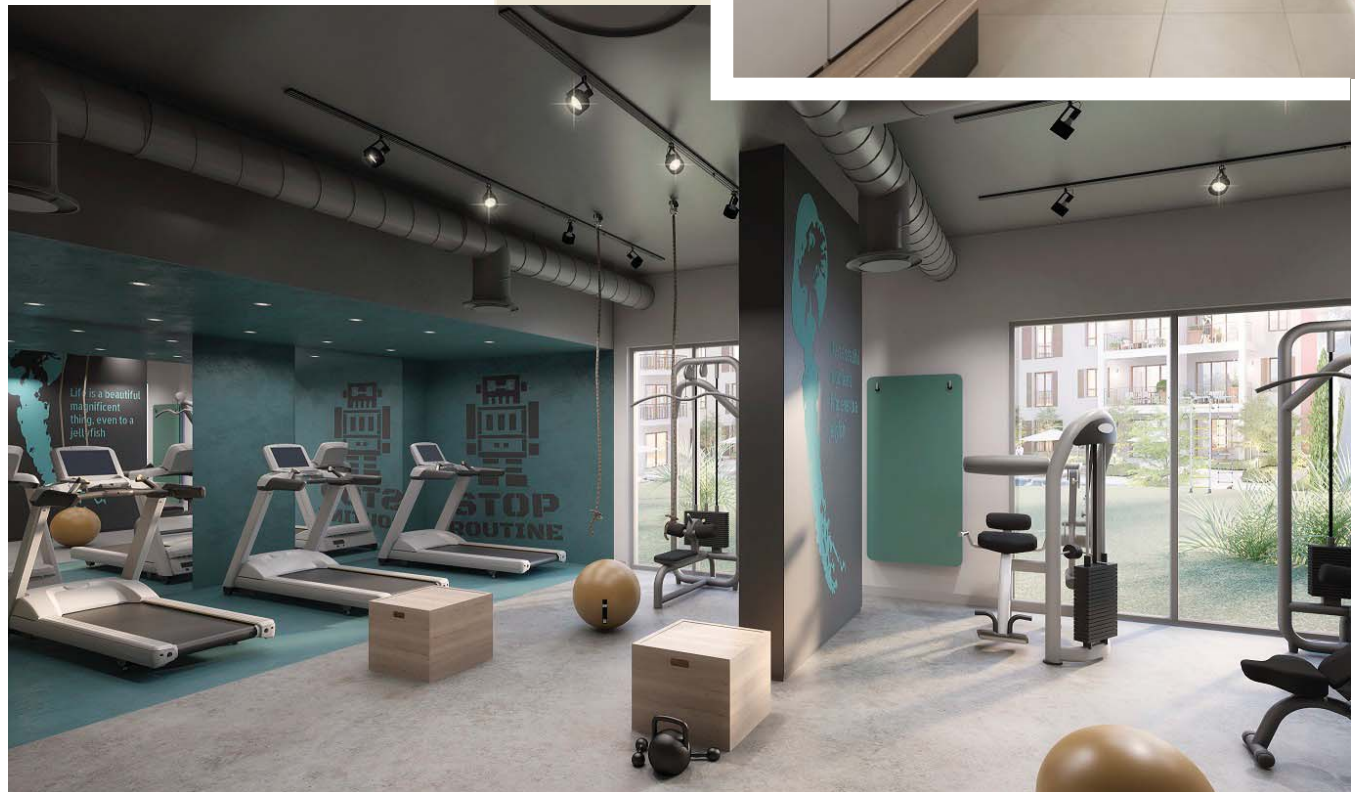
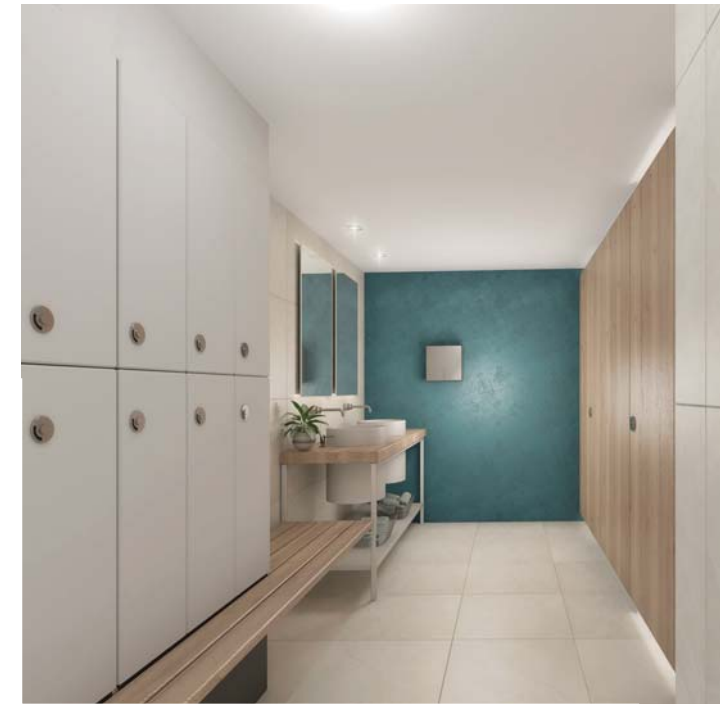
With large swimming pools, a gym, and easy access to the beach and marina, Port de La Mer boasts premium amenities in stunning settings. Its bridges connect the different spaces together, from its bustling piazzas to its inviting open spaces, all of which surround its central podium. Restaurants, hotels and retail outlets along the waterfront further infuse energy and vitality into life at Port de La Mer.

AMENITIES

PORT *de la* MER

Inspired by the allure of the Mediterranean, Port de La Mer is an island destination with an relaxed, easy-going feel. Visitors and residents here can indulge in:

- +190 Berth marina and yacht club
- 5-star hospitality experiences
- Seaside and marina promenades
- Beach access
- Fashionable boutiques restaurants and cafes
- Magnificent swimming pools
- Outdoor park with kids play areas
- Private landscaped terraces
- Excellent private facilities and amenities



THE FIRST

FREEHOLD MASTER COMMUNITY

IN JUMEIRAH



MAGNIFICENT VIEWS OF THE SEA AND DUBAI SKYLINE





LIVE LIFE TO THE FULLEST BY THE SEA

Combine dreams of living seaside with all the advantages of urban convenience at Le Pont, a residential collection inspired by coastal colour palettes.

With a buzzing marina and views of Dubai's iconic skyline, this waterfront community offers the ultimate Mediterranean feel and quality of life.

Choose from a variety of 1, 2, 3 and 4-bedroom apartments and an exclusive penthouse.

LE PONT

PORT
de La
MER

A WELCOMING FEEL THAT STEMS FROM CONTEMPORARY DESIGN



LE PONT



PORT *de La* MER





LE PONT

PORT
de la
MER

**THE LIFE YOU DREAM
IN THE PLACE YOU DESIRE**





PORT
de la
MER

LE PONT

**A SEASIDE DESTINATION
UNLIKE ANY OTHER**

MASTER PLAN

MASTER




LEGEND:


- C LA COTE
- R LA RIVE
- P LE PONT
- H HOTELS
- ▲ LA MER & PDLM ENTRIES
- ▲ BEACH ACCESS
- 1 PDLM BEACH
- 2 PDLM MARINA
- 3 YACHT CLUB
- 4 LA MER ZONE N
- 5 LAGUNA WATER PARK
- 6 LA MER BEACH
- 7 RESTAURANTS & RETAIL
- 8 DUBAI MARINE RESORT
- 9 PALM STRIP MALL
- 10 JUMEIRAH MOSQUE
- 11 JUMEIRAH CENTRE
- 12 THE VILLAGE MALL
- 13 JUMEIRAH PLAZA
- 14 CENTURY PLAZA

PLAN

PORT *de la* MER



 +971 55 837 7712

 +971 55 837 7712

 sales@drehomes.com

 <http://le-pont.port-de-lamer.com>